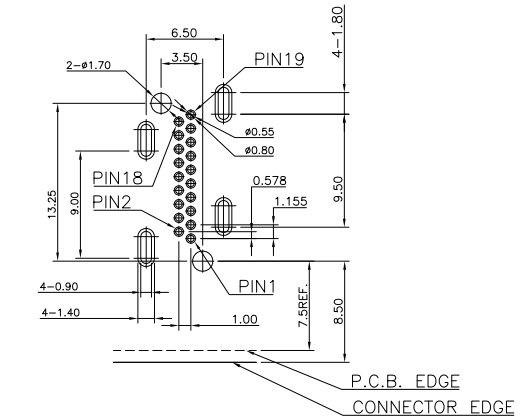
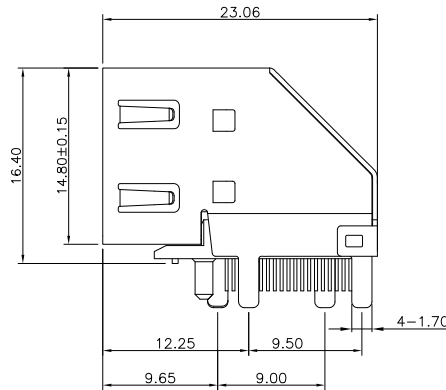
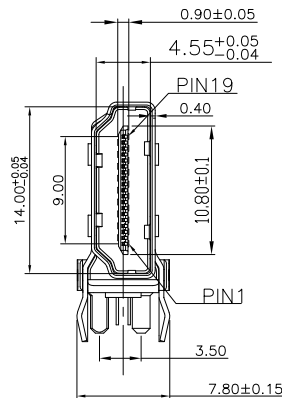
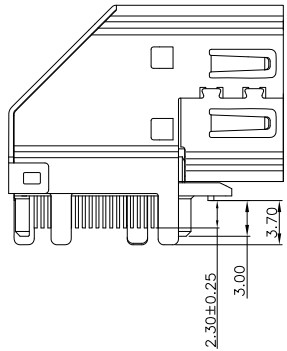
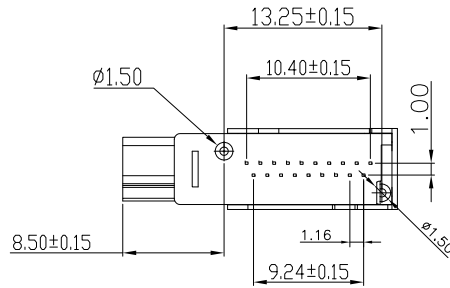
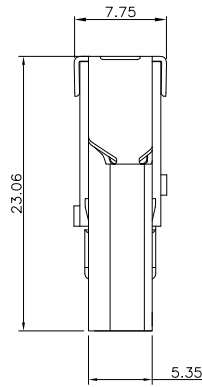


MECHANICAL:



RECOMMENDED PCB LAYOUT (TOP VIEW)
TOLERANCE: ±0.05mm

SPECIFICATIONS:

1. ELECTRICAL CHARACTERISTICS
 - 1-1. CURRENT RATING: 0.5 AMP
 - 1-2. VOLTAGE RATING: 40 V
 - 1-3. CONTACT RESISTANCE: 30MILLIOHMS MAX
 - 1-4. INSULATION RESISTANCE: 100M MIN. @ 500V DC
 - 1-5. DIELECTRIC WITHSTANDING VOLTAGE: 500V AC FOR 1 MINUTE
2. MECHANICAL CHARACTERISTICS:
 - 2-1. INSERTION FORCE : 4.5KGF MAX.
 - 2-2. WITHDRAWING FORCE : 1KGF ~ 4KGF.
3. LIFE TEST: 10000 CYCLES
4. OPERATING TEMPERATURE: -25°C TO +85°C



Champyang International Ltd., Co

A0	RELEASED	Allen	2022-03-29
REV	DESCRIPTION.	APPD.	Date

FILE NO: AHD05 (Series)		TITLE 圖名		HDMI 側插式成品兩K腳兩直腳不帶螺孔 針長2.3,兩K腳邊距7.80		UNIT 單位	mm inch
TOLERANCE(公差): 0.000 mm ± 0.075 mm 0.00 mm ± 0.15 mm 0.0 mm ± 0.25 mm		PART NO. 料號		AHD05-341-CH-A		SCALE 比例	1:1
DRAWN BY 製圖		Ray		DATE 日期		2022-03-29	
CHECKED BY 審核		Allen		DATE 日期		2022-03-29	