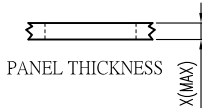
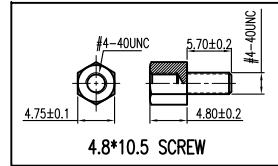
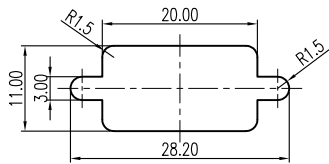


RECOMMENDED P.C.B LAYOUT



Screw L=4.7 For Panel Thickness Under 1.2mm  
Screw L=5.7 For Panel Thickness Between 1.2~2.0mm



RECOMMENDED PANEL CUT-OUT

INSPECTION DIMENSION:(A)-(D)

SPECIFICATIONS

1. D-SUB
- 1.1 Voltage: 250 VAC(RMS) Max.
- 1.2 Current Rating: 5 Ampere per Contact
- 1.3 Contact Resistance: 10 Milliohms Max.
- 1.4 Insulation Resistance: 5000 Megohms Min.
- 1.5 Dielectric Withstanding Voltage: 1000V AC(RMS)
- 1.6 Screwing torque : 3.0 Kgf.cm Max.
- 1.7 Conn. Test Mating Force: 6.4 Kgf Max.
- 1.8 Conn. Test Unmating Force: 1.2 Kgf Min.
- 1.9 Operating Temperature: -55°C to +85°C
- 1.10 Salt Spray: 48 Hours.
- 1.11 Waterproof Rate: IP 67 Min.

NOTES

1. MATERIAL:
  - Housing:PA9T, UL 94V-0, Color:Black.
  - Terminal:Copper Alloy.
  - Shell:SPCC.
  - Boardlock:Copper Alloy.
  - Screw:Copper Alloy.
  - Waterproof Ring: Epoxy.
  - Waterproof Glue: Silica Gel.
2. FINISH:
  - Terminal:Full Gold Plated over Nickel Area.
  - Shell:Nickel Plated.
  - Boardlock:Tin Plated.
  - Screw:Nickel Plated.
3. This Product is LEAD-FREE & RoHS Compliance Product.



Champyang International Ltd., Co

FILE NO :	ADA11 ( Series)
TOLERANCE(公差):	0.000 mm ± 0.13 mm 0.00 mm ± 0.25 mm
ANGULAR	±2°
REV	A0
DESCRIPTION.	RELEASED
APPD.	Allen
Date	2019-10-07

FILE NO :	ADA11 ( Series)	TITLE	D-SUB WATERPROOF CONNECTORS, STRAIGHT		UNIT	mm
TOLERANCE(公差):	0.000 mm ± 0.13 mm 0.00 mm ± 0.25 mm	PART NO.	ADA11-D1P-Hx2VQ13N0		SCALE	1:1
ANGULAR	±2°	DRAWN BY	Ben	DATE	2019-10-07	REV.
REV	A0	CHECKED BY	Allen	DATE	2019-10-07	版本
DESCRIPTION.	RELEASED					A0
APPD.	Allen					
Date	2019-10-07					