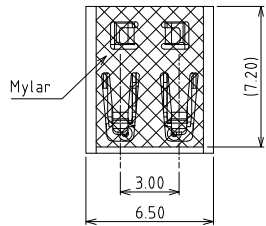
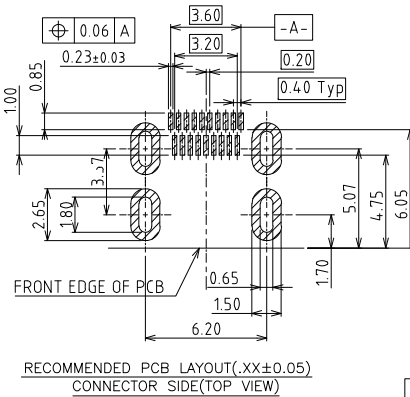
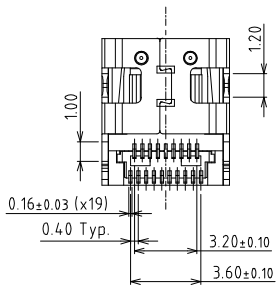
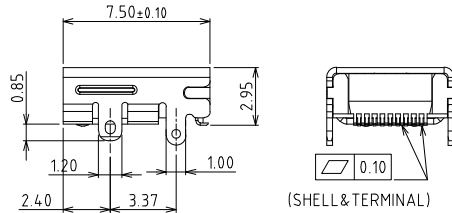
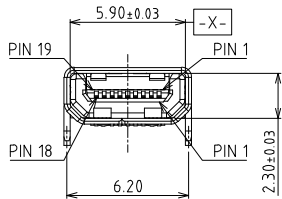


MECHANICAL:



PIN	Signal Assignment	PIN	Signal Assignment
1	Hot Plug Detect	2	Utility
3	TMDS Data2+	4	TMDS Data2 Shield
5	TMDS Data2-	6	TMDS Data1+
7	TMDS Data1 Shield	8	TMDS Data1-
9	TMDS Data0+	10	TMDS Data0 Shield
11	TMDS Data0-	12	TMDS Clock+
13	TMDS Clock Shield	14	TMDS Clock-
15	CEC	16	DDC/CEC Ground
17	SCL	18	SDA
19	+5V Power		



NOTE:
 1.MATERIAL AND FINISH SEE THE TABLE.
 2.MECHANICAL CHARACTERISTICS
 INSERTION FORCE: 44.1N MAX
 EXTROCTION FORCE: 5N MIN(AFTER 5000 CYCLES 3N MIN.), 25N MAX.
 MATING CYCLE:5000 CYCLES
 3.ELECTRICAL CHARACTERISTICS
 RATING CURRENT: 0.5A
 RATING VOLTAGE: 40V
 CONTACT RESISTANCE: 10 MILLOHMS OHMS MAX (EXCLDUING CONDUCTOR RESISTANCE)
 INSULATION RESISTANCE:
 a, UNMATED: 100M OHMS MIN AT 500 VDC
 b, MATED: 10M OHMS MIN AT 150 VDC
 DIELECTRIC WITHSTANDING VOLTAGE:
 250V AC/1MINUTE
 OPERATING TEMPERATURE: -20°C--+85°C
 STORAGE TEMPERATURE: -20°C--+85°C
 4.TAPE REEL PACKAGE, 1000PCS/Reel

3	SHELL	1	SUS NI 50U" PLATING ALL OVER
2	TERMINAL	19	C2680R-H SEE PART NO.
1	HOUSING	1	LCP E130i UL94V-0 BLACK
NO	PART NAME	QTY	MATERIAL PLATING & COLOR



Champyang International Ltd., Co

REV	DESCRIPTION.	APPD.	Date
A0	RELEASED	Allen	2019-06-27

FILE NO:	AHD04 (Series)	TITLE	HDMI SMT type shell DIP		UNIT	mm
		圖名			單位	inch
TOLERANCE(公差):	0.000 mm ± 0.075 mm	PART NO.	AHD04-541-DR		SCALE	1:1
	0.00 mm ± 0.15 mm	料號			比例	
	0.0 mm ± 0.25 mm	DRAWN BY	Ben	DATE	2019-06-27	REV.
		製圖	Allen	日期	2019-06-27	版本
		CHECKED BY	Allen	日期	2019-06-27	
		審核				