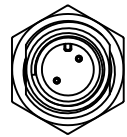
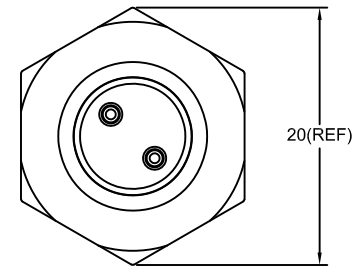
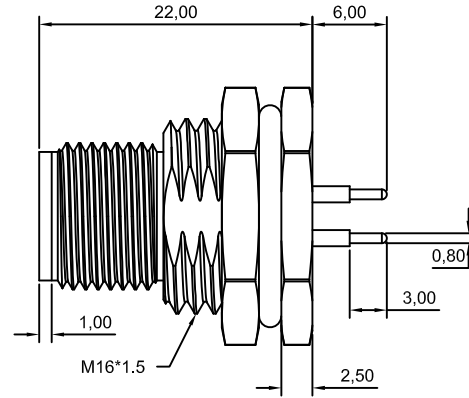
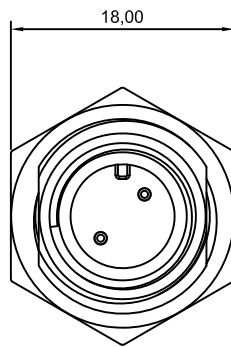
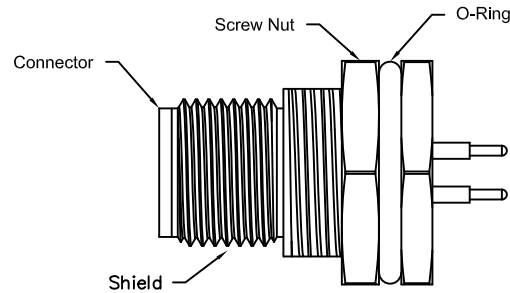
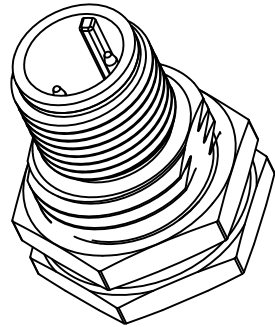
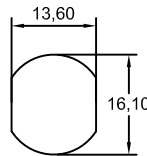


Note:

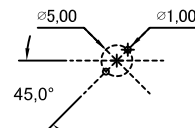
- waterproof Rate : IPX7.
- Male Pin : Copper Alloy , Gold Plated.
- Shield : Zinc die casting alloy , Nickel Plated.
- Screw Nut : Copper Alloy , Nickel Plated.
- O-Ring:EPDM , Black.
- For Panel Thickness Max 4.5mm



Pin Assignments Front View



Recommended Panel Cut-Out



2 Pin Male Connector
Male Pin PCB Layout



Champyang International Ltd., Co

FILE NO : AM12		TITLE 圖名		M12, 2 Pin, Male, Front Lock, Waterproof		UNIT 單位	mm inch
TOLERANCE(公差): 0.000 mm ± 0.10 mm 0.00 mm ± 0.20 mm 0.0 mm ± 0.30 mm x° ± 1.0° 0.x° ± 0.5°		PART NO. 料號		AM12-02PMMP-SF7001-A		SCALE 比例	1:1
RELEASED		DRAWN BY 製圖		Ben	DATE 日期	2019-10-30	REV. 版本
DESCRIPTION.		CHECKED BY 審核		Allen	DATE 日期	2019-10-30	A0
APPD.	Date						

REV

A

B

C

D