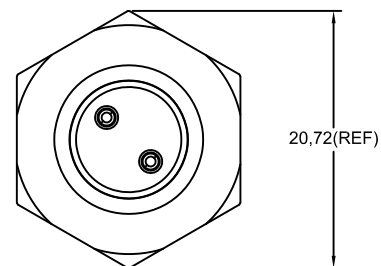
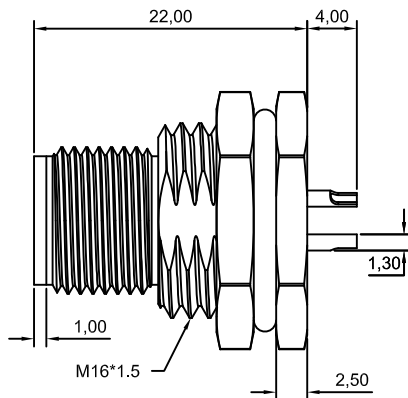
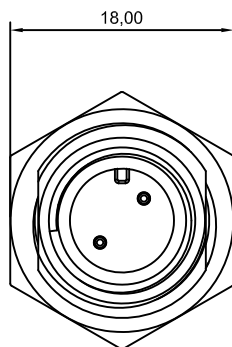
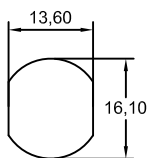


Note:

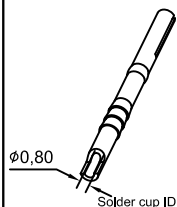
- waterproof Rate : IPX7.
- Male Pin : Copper Alloy , Gold Plated.
- Shield : Zinc die casting alloy , Nickel Plated.
- Screw Nut : Copper Alloy , Nickel Plated.
- O-Ring:EPDM , Black.
- For Panel Thickness Max 4.5mm



Pin Assignments Front View



Recommended Panel Cut-Out



Solder cup ID



Champyang International Ltd., Co

REV	DESCRIPTION.	APPD.	Date
A0	RELEASED	Allen	2019-10-31

FILE NO :	AM12	TITLE	M12, 2Pin, Male, Front Lock, For Cable type, Waterproof		UNIT	mm
TOLERANCE(公差):	0.000 mm ± 0.10 mm	圖名			單位	inch
0.00 mm ± 0.20 mm	0.0 mm ± 0.30 mm	PART NO.	AM12-05PMMS-SF7001-A		SCALE	1:1
0.0 mm ± 0.30 mm	x° ± 1.0°	料號			比例	
x° ± 1.0°	0.x° ± 0.5°	DRAWN BY	Ben	DATE	2019-10-31	REV.
0.x° ± 0.5°		製圖	Allen	日期	2019-10-31	版本
		CHECKED BY	Allen	DATE	2019-10-31	A0
		審核		日期		