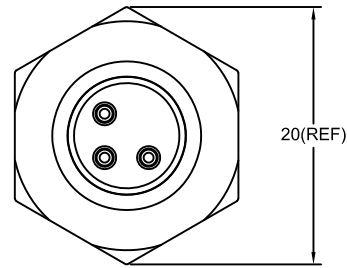
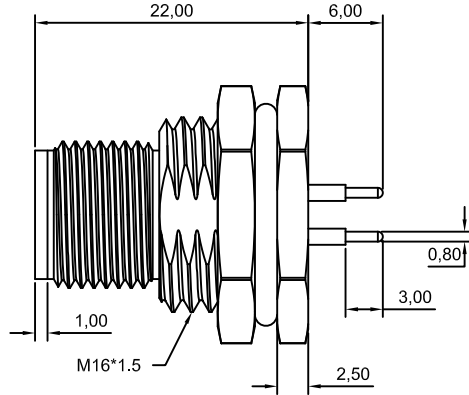
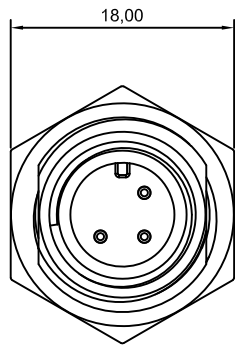
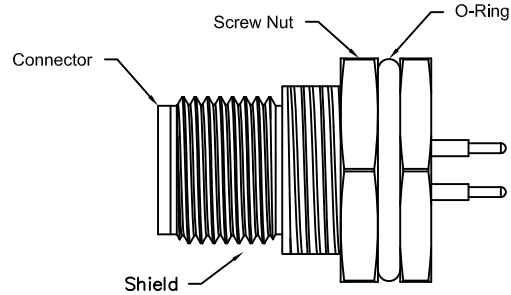
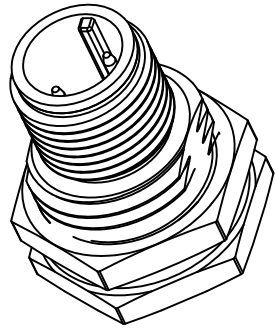


L K J I H

3
2
1

4
5
6

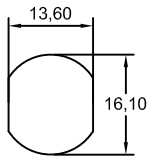


Note:

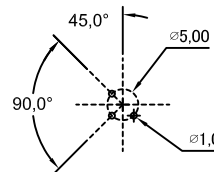
- waterproof Rate : IPX7.
- Male Pin : Copper Alloy , Gold Plated.
- Shield : Zinc die casting alloy , Nickel Plated.
- Screw Nut : Copper Alloy , Nickel Plated.
- O-Ring:EPDM , Black.
- For Panel Thickness Max 4.5mm



Pin Assignments Front View



Recommended Panel Cut-Out



3 Pin Male Connector Male Pin PCB Layout



Champyang International Ltd., Co

FILE NO : AM12

TITLE
圖名

M12 3 Pin, Male, Front Lock,
Waterproof

UNIT
單位

mm
inch

TOLERANCE(公差):

- 0.000 mm ± 0.10 mm
- 0.00 mm ± 0.20 mm
- 0.0 mm ± 0.30 mm
- x° ± 1.0°
- 0.x° ± 0.5°

PART NO.
料號

AM12-03PMMP-SF7001-A

SCALE
比例

1:1

DRAWN BY
製圖

Ben

DATE
日期

2019-10-30

REV.
版本

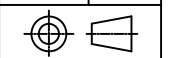
A0

CHECKED BY
審核

Allen

DATE
日期

2019-10-30



RELEASED

Allen

2019-10-30

DESCRIPTION.

APPD.

Date

REV

A

B

C

D