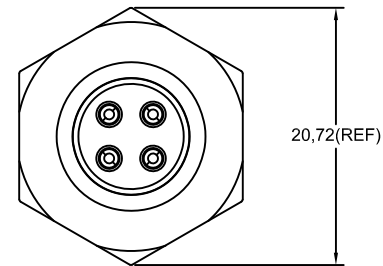
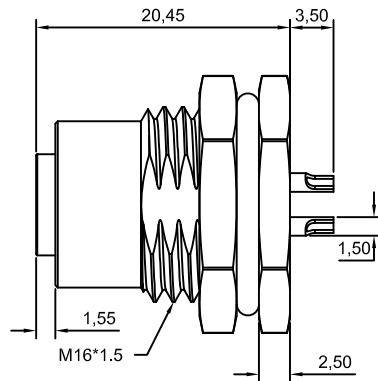
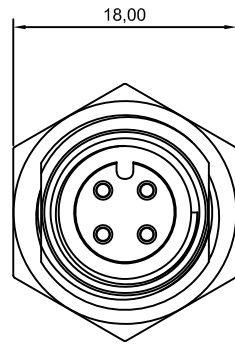
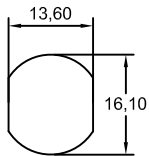


Note:

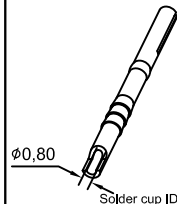
- waterproof Rate : IPX7.
- Male Pin : Copper Alloy , Gold Plated.
- Shield : Zinc die casting alloy , Nickel Plated.
- Screw Nut : Copper Alloy , Nickel Plated.
- O-Ring1:EPDM , Black.
- O-Ring2:EPDM
- For Panel Thickness Max 4.5mm



Pin Assignments Front View



Recommended Panel Cut-Out



Solder cup ID



Champyang International Ltd., Co

FILE NO : AM12				TITLE 圖名		M12, 4Pin, Female, Front Lock, For Cable type, Waterproof		UNIT 單位	mm inch		
TOLERANCE(公差): 0.000 mm ± 0.10 mm 0.00 mm ± 0.20 mm 0.0 mm ± 0.30 mm x° ± 1.0° 0.x° ± 0.5°				PART NO. 料號		AM12-04PFFS-SF7001-A		SCALE 比例	1:1		
RELEASED				Allen		2019-10-31		REV. 版本	A0		
REV	DESCRIPTION.			APPD.	Date		CHECKED BY 審核	Allen	DATE 日期	2019-10-31	

A

B

C

D