

L K J I H

3

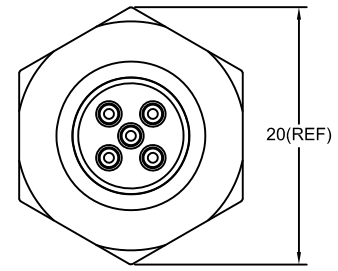
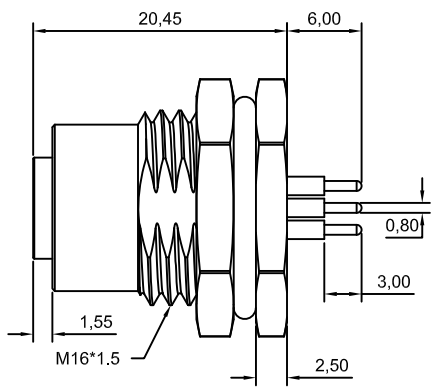
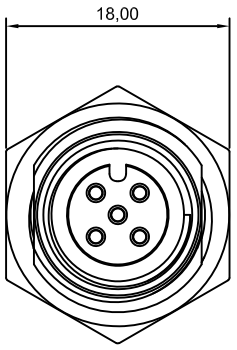
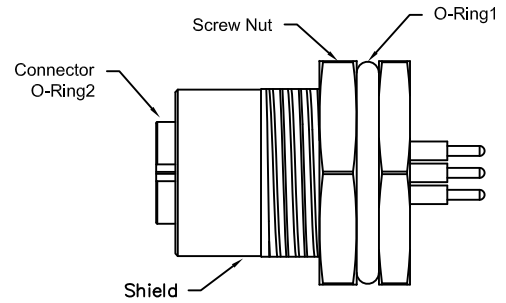
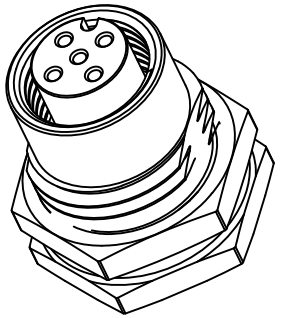
2

1

4

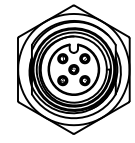
5

6

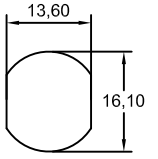


Note:

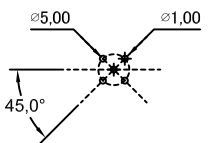
- waterproof Rate : IPX7.
- Male Pin : Copper Alloy , Gold Plated.
- Shield : Zinc die casting alloy , Nickel Plated.
- Screw Nut : Copper Alloy , Nickel Plated.
- O-Ring1: EPDM , Black.
- O-Ring2: EPDM , Black.



Pin Assignments Front View



Recommended Panel Cut-Out



5 Pin Female Connector Female Pin PCB Layout



Champyang International Ltd., Co

FILE NO : AM12		TITLE 圖名		M12, 5 Pin, Female, Front Lock, Waterproof		UNIT 單位	mm inch
TOLERANCE(公差): 0.000 mm ± 0.10 mm 0.00 mm ± 0.20 mm 0.0 mm ± 0.30 mm x° ± 1.0° 0.x° ± 0.5°		PART NO. 料號		AM12-05PFFP-SF7001-A		SCALE 比例	1:1
		DRAWN BY 製圖		Ben	DATE 日期	2019-10-30	REV. 版本
		CHECKED BY 審核		Allen	DATE 日期	2019-10-30	

REV	DESCRIPTION.	APPD.	Date
A0	RELEASED	Allen	2019-10-30