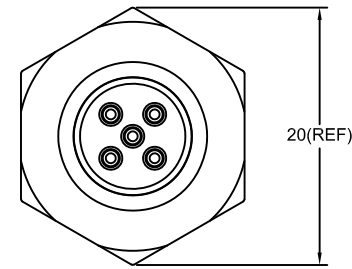
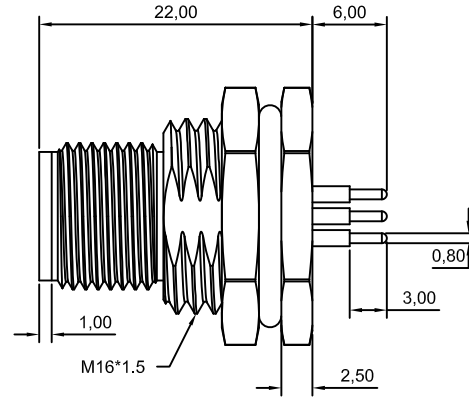
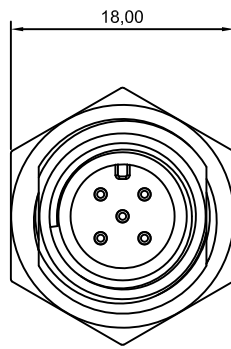
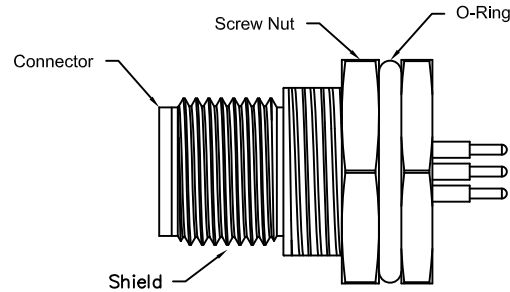
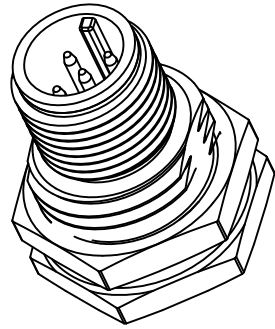
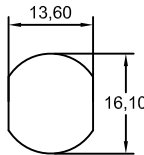


Note:

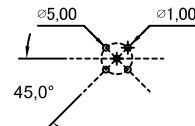
- waterproof Rate : IPX7.
- Male Pin : Copper Alloy , Gold Plated.
- Shield : Zinc die casting alloy , Nickel Plated.
- Screw Nut : Copper Alloy , Nickel Plated.
- O-Ring:EPDM , Black.
- For Panel Thickness Max 4.5mm



Pin Assignments Front View



Recommended Panel Cut-Out



5 Pin Male Connector Male Pin PCB Layout



Champyang International Ltd., Co

FILE NO : AM12

TITLE

M12, 5 Pin, Male, Front Lock, Waterproof

UNIT 單位 mm inch

TOLERANCE(公差):

0.000 mm ± 0.10 mm
 0.00 mm ± 0.20 mm
 0.0 mm ± 0.30 mm
 x° ± 1.0°
 0.x° ± 0.5°

PART NO. 料號

AM12-05PMMP-SF7001-A

SCALE 比例 1:1

DRAWN BY 製圖

Ben

DATE 日期

2019-10-30

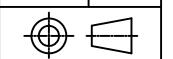
REV. 版本 A0

CHECKED BY 審核

Allen

DATE 日期

2019-10-30



RELEASED

Allen

2019-10-30

DESCRIPTION.

APPD.

Date

REV