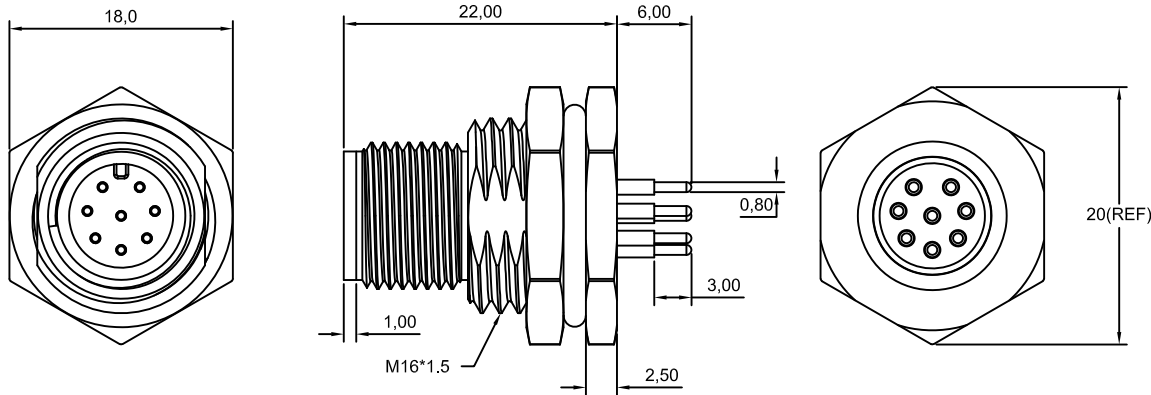
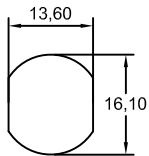


Note:

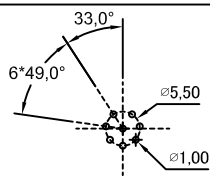
- waterproof Rate : IPX7.
- Male Pin : Copper Alloy , Gold Plated.
- Shield : Zinc die casting alloy , Nickel Plated.
- Screw Nut : Copper Alloy , Nickel Plated.
- O-Ring:EPDM , Black.
- For Panel Thickness Max 4.5mm



Pin Assignments Front View



Recommended Panel Cut-Out



8 Pin Male Connector Male Pin PCB Layout



Champyang International Ltd., Co

NO	REV	DESCRIPTION.	APPD.	Date
		RELEASED	Allen	2019-10-30
A				

FILE NO :	AM12	TITLE	M12, 8 Pin, Male, Front Lock, Waterproof		UNIT	mm
TOLERANCE(公差):	0.000 mm ± 0.10 mm	圖名			單位	inch
0.00 mm ± 0.20 mm	0.0 mm ± 0.30 mm	PART NO.	AM12-08PMMP-SF7001-A		SCALE	1:1
0.0 mm ± 0.30 mm	x° ± 1.0°	料號	DRAWN BY	Ben	DATE	2019-10-30
0.x° ± 0.5°	0.x° ± 0.5°	製圖	製圖	Ben	日期	2019-10-30
		CHECKED BY	Allen	DATE	2019-10-30	REV.
		審核	Allen	日期	2019-10-30	版本
						A0