

L K J I H

3

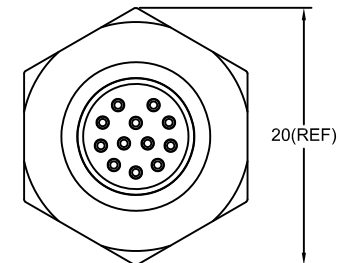
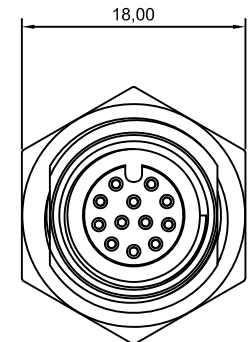
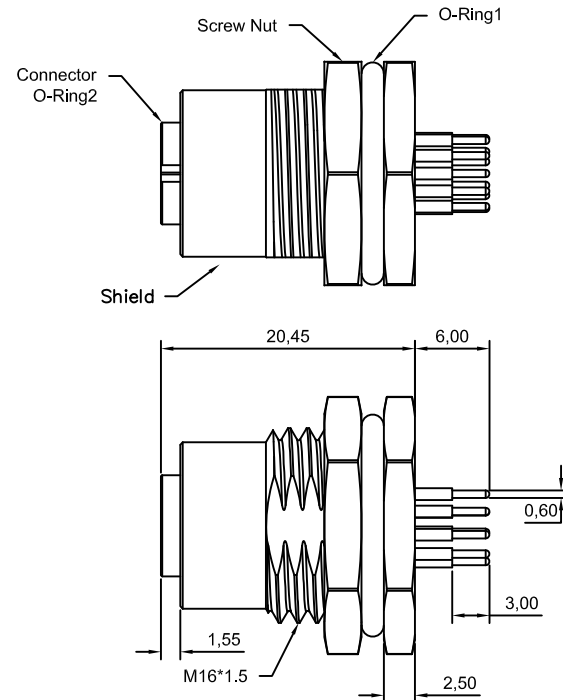
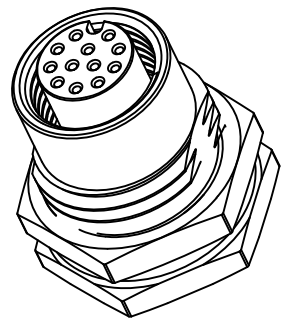
2

1

4

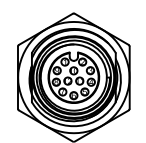
5

6

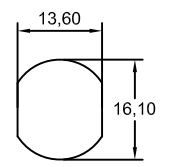


Note:

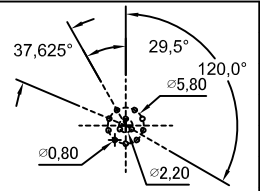
- waterproof Rate : IPX7.
- Male Pin : Copper Alloy , Gold Plated.
- Shield : Zinc die casting alloy , Nickel Plated.
- Screw Nut : Copper Alloy , Nickel Plated.
- O-Ring1: EPDM
- O-Ring2: EPDM
- For Panel Thickness Max 4.5mm



Pin Assignments Front View



Recommended Panel Cut-Out



12 Pin Female Connector Female Pin PCB Layout



Champyang International Ltd., Co

NO	REV	RELEASED	Allen	2019-10-30
		DESCRIPTION.	APPD.	Date

FILE NO :	AM12	TITLE	M12, 12 Pin, Female, Front Lock, Waterproof		UNIT	mm
		圖名			單位	inch
TOLERANCE(公差):		PART NO.	AM12-12PFFP-SF7001-A		SCALE	1:1
0.000 mm ± 0.10 mm		料號			比例	
0.00 mm ± 0.20 mm		DRAWN BY	Ben	DATE	2019-10-30	REV.
0.0 mm ± 0.30 mm		製圖		日期		版本
x° ± 1.0°		CHECKED BY	Allen	DATE	2019-10-30	A0
0.x° ± 0.5°		審核		日期		