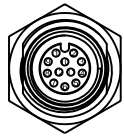
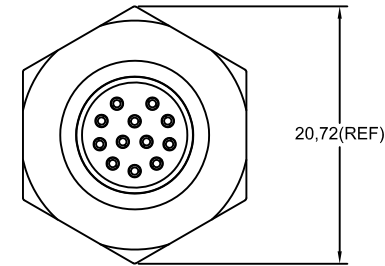
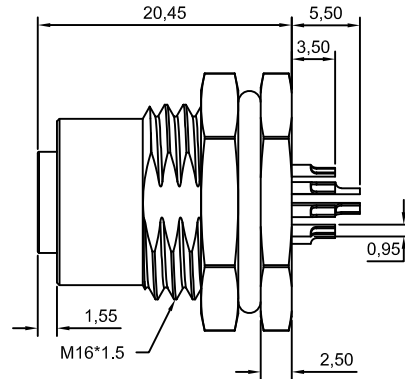
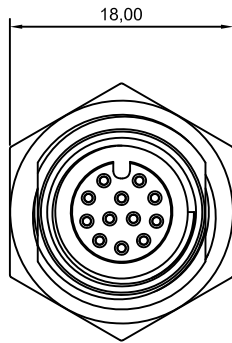
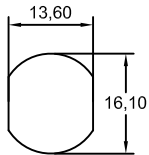


Note:

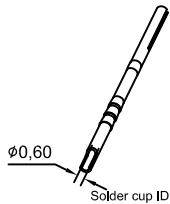
- waterproof Rate : IPX7.
- Male Pin : Copper Alloy , Gold Plated.
- Shield : Zinc die casting alloy , Nickel Plated.
- Screw Nut : Copper Alloy , Nickel Plated.
- O-Ring1: EPDM
- O-Ring2: EPDM
- For Panel Thickness Max 4.5mm



Pin Assignments Front View



Recommended Panel Cut-Out



Solder cup ID



Champyang International Ltd., Co

NO	REV	DESCRIPTION.	APPD.	Date
		RELEASED	Allen	2019-10-31

FILE NO :	AM12	TITLE	M12, 12Pin, Female, Front Lock, For Cable type, Waterproof		UNIT	mm
		圖名			單位	inch
TOLERANCE(公差):		PART NO.	12A-12PFFS-SF7001		SCALE	1:1
0.000 mm ± 0.10 mm		料號			比例	
0.00 mm ± 0.20 mm		DRAWN BY	Ben	DATE	2019-10-31	REV.
0.0 mm ± 0.30 mm		製圖		日期		版本
x° ± 1.0°		CHECKED BY	Allen	DATE	2019-10-31	A0
0.x° ± 0.5°		審核		日期		