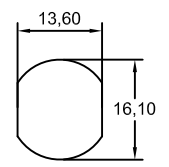
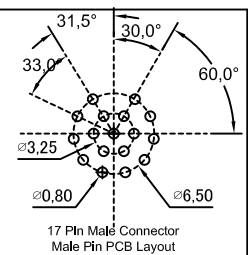


Pin Assignments Front View



Recommended Panel Cut-Out



17 Pin Male Connector Male Pin PCB Layout

Note:

- waterproof Rate : IPX7.
- Male Pin : Copper Alloy , Gold Plated.
- Shield : Zinc die casting alloy , Nickel Plated.
- Screw Nut : Copper Alloy , Nickel Plated.
- O-Ring:EPDM
- For Panel Thickness Max 4.5mm



Champyang International Ltd., Co

REV	DESCRIPTION.	APPD.	Date
A0	RELEASED	Allen	2019-10-30

FILE NO :	AM12	TITLE	M12, 17 Pin, Male, Front Lock, Waterproof	UNIT	mm
TOLERANCE(公差):	0.000 mm ± 0.10 mm 0.00 mm ± 0.20 mm 0.0 mm ± 0.30 mm x° ± 1.0° 0.x° ± 0.5°	圖名	M12, 17 Pin, Male, Front Lock, Waterproof	單位	inch
		PART NO.	AM12-17PMMP-SF7001-A	SCALE	1:1
		DRAWN BY	Ben	DATE	2019-10-30
		製圖	Ben	日期	2019-10-30
		CHECKED BY	Allen	DATE	2019-10-30
		審核	Allen	日期	2019-10-30