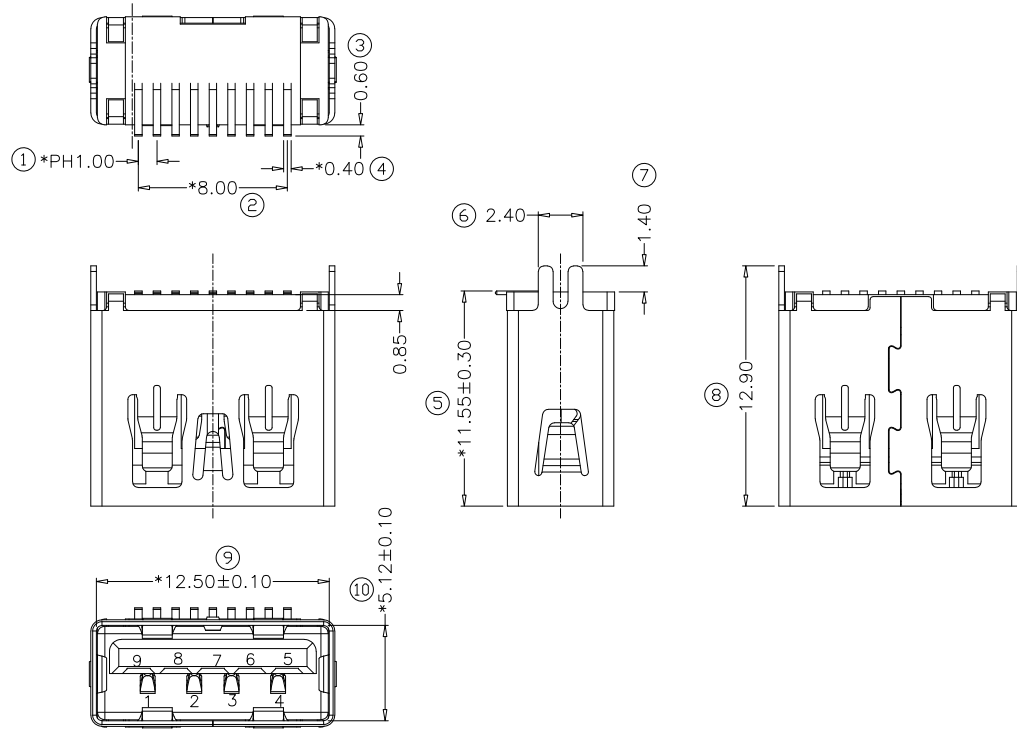
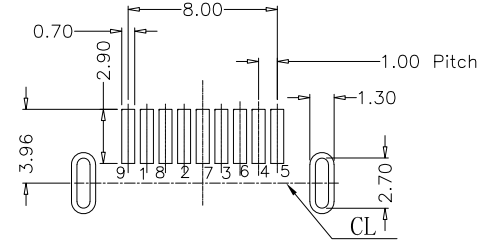


MECHANICAL:



NOTE:

- 1.ELECTRICAL CHARACTERISTICS;
 - 1.1 CONTACT RESISTANCE:30mΩ MAXIMUM INITIAL
±10mΩ AFTER TEST
 - 1.2 DIELECTRIC WITHSTANDING VOLTAGE:100 V R.M.S.
 - 1.3 CONTACT CURRENT RATING:1.5A
 - 1.4 INSULATION RESISTANCE 100MΩ MIN
 - 1.5 OPERATING TEMPERATURE:-40°C to +85°C
- 2.MECHANICAL CHARACTERISTICS:
 - 2.1 MATING FORCE:35N MAX
 - 2.2 UNMATING FORCE: 8N MIN
 - 2.2 DURABILITY: 1500 Cycles, 500 cycles per hour



P. C. B LAYOUT T=1.20mm±0.05

3	TERMINAL	1PCS	Phosphor Bronze;T=0.2	半金錫1μ"
2	SHELL	1PCS	C2680 T=0.3	Ni≥50μ"
1	Housing MOLDING	1PCS	LCP BLUE UL94-V0	
No.	NAME	Q'TY	MATERIAL	FINISH



Champyang International Ltd., Co

3	TERMINAL	1PCS	Phosphor Bronze;T=0.2	半金錫1μ"
2	SHELL	1PCS	C2680 T=0.3	Ni≥50μ"
1	Housing MOLDING	1PCS	LCP BLUE UL94-V0	
No.	NAME	Q'TY	MATERIAL	FINISH
A1	RELEASED		Allen	2023-01-30
REV	DESCRIPTION.		APPD.	Date

FILE NO : AU313 (Series)		TITLE 圖 名		UNIT 單位		mm inch	
TOLERANCE(公差): 0.000 mm ± 0.10 mm 0.00 mm ± 0.25 mm 0.0 mm ± 0.30 mm		PART NO. 料 號		SCALE 比例		1 : 1	
DRAWN BY 製 圖		DATE 日 期		REV. 版 本		A1	
CHECKED BY 審 核		DATE 日 期		2023-01-30			